

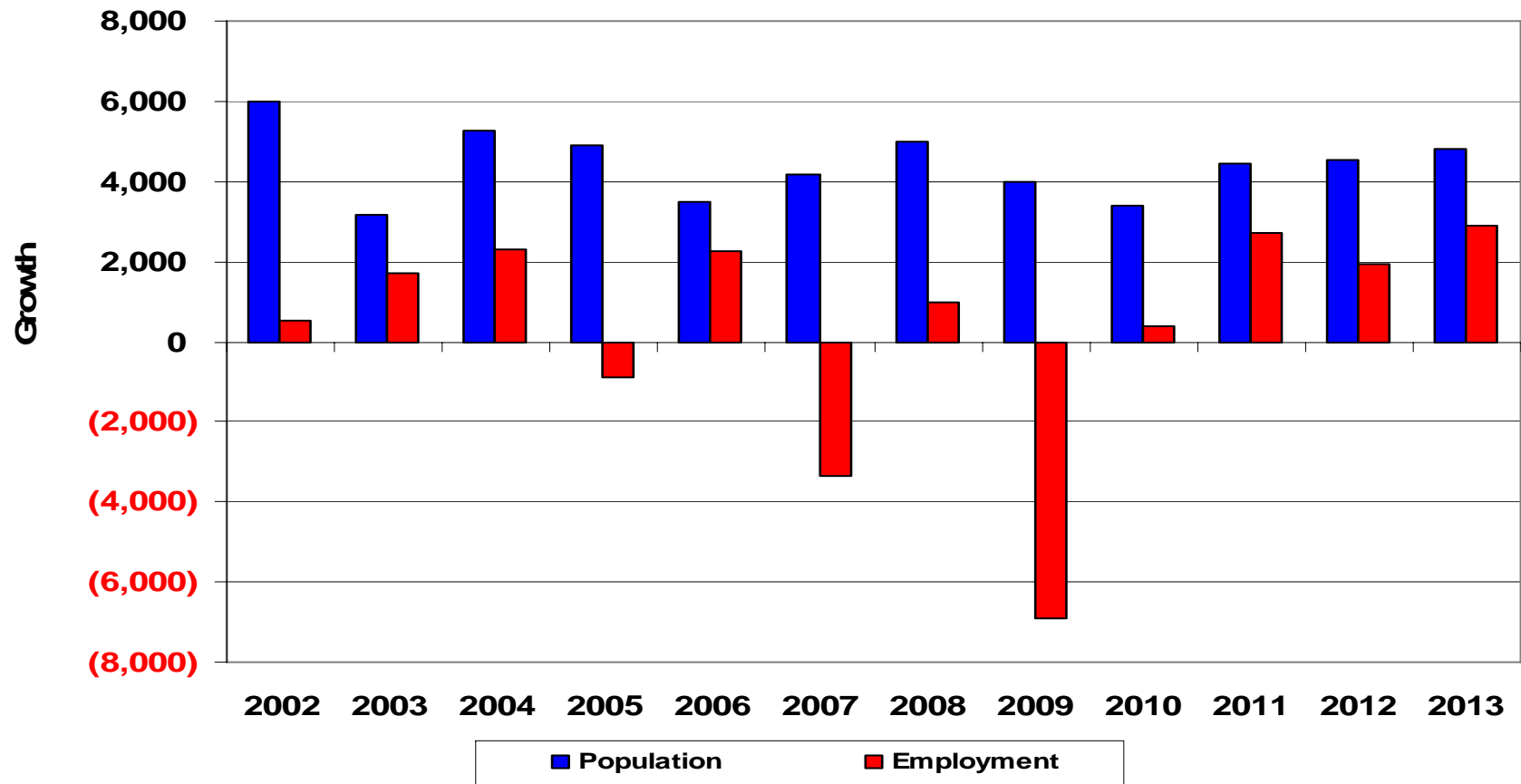
Gainesville MSA

ECONOCAST

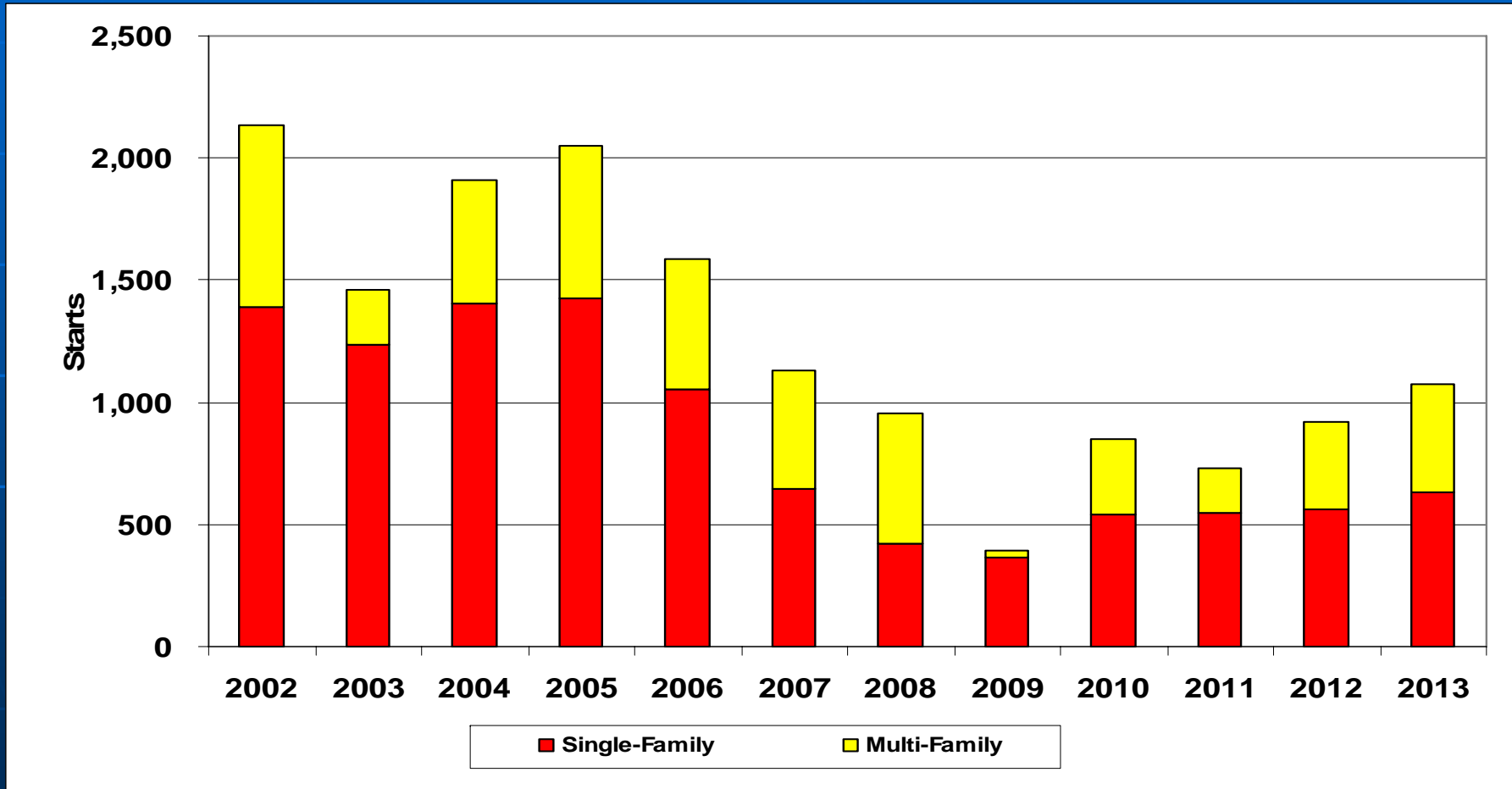
	<u>2008</u>	<u>2009</u>	<u>2010</u>	<u>2011</u>	<u>2012</u>	<u>2013</u>
Population	269,644	273,625	277,030	281,475	286,025	290,836
Population Change	4,977	3,981	3,405	4,445	4,551	4,811
Employment	125,497	118,578	118,954	121,669	123,620	126,535
Employment Change	985	(6,919)	376	2,714	1,951	2,914
Per Capita Income (Thousands of Dollars)	30,025	28,879	27,749	27,964	28,388	28,088
Unemployment Rate	4.2	5.6	5.7	5.7	4.6	5.5
Total Housing Starts	958	393	850	733	920	1,072
Single Family	422	366	542	545	560	631
Multifamily	536	27	308	188	360	441
New Single-Family Closings	36	40	391	510	519	444
New Single-Family Price	219,102	204,916	146,664	266,188	224,696	235,060
Existing Single-Family Closings	2,102	1,516	3,920	4,204	4,452	4,502
Existing Single-Family Price	197,639	181,975	185,930	215,075	199,033	216,357
New Condominium Closings	89	131	270	269	211	191
New Condominium Price	139,473	192,588	153,897	174,432	122,584	168,558
Existing Condominium Closings	294	145	67	248	348	282
Existing Condominium Price	124,756	92,578	87,673	100,521	106,784	129,812
Foreclosures	1,173	2,697	2,896	813	267	293
Commercial Construction (Sq. Ft.)	1,175,898	780,679	709,849	1,504,964	1,363,510	1,668,099
Local Retail	240,472	191,752	155,403	206,228	215,924	228,938
Regional Retail	63,273	50,455	40,904	54,282	56,848	60,272
Office	241,377	72,971	40,304	447,738	309,410	476,138
Industrial	62,262	61,959	144,962	195,263	208,020	234,612
Warehouse	101,225	30,238	15,767	187,093	128,674	198,733
Hotel	74,656	59,453	47,058	62,488	64,209	68,307
Hospital	1,811	1,442	1,142	1,516	1,558	1,657
Inst./Govt.	390,820	312,409	264,309	350,358	378,867	399,441

Gainesville MSA

GROWTH IN POPULATION & EMPLOYMENT



Gainesville MSA HOUSING STARTS



Gainesville MSA

COMMERCIAL CONSTRUCTION

