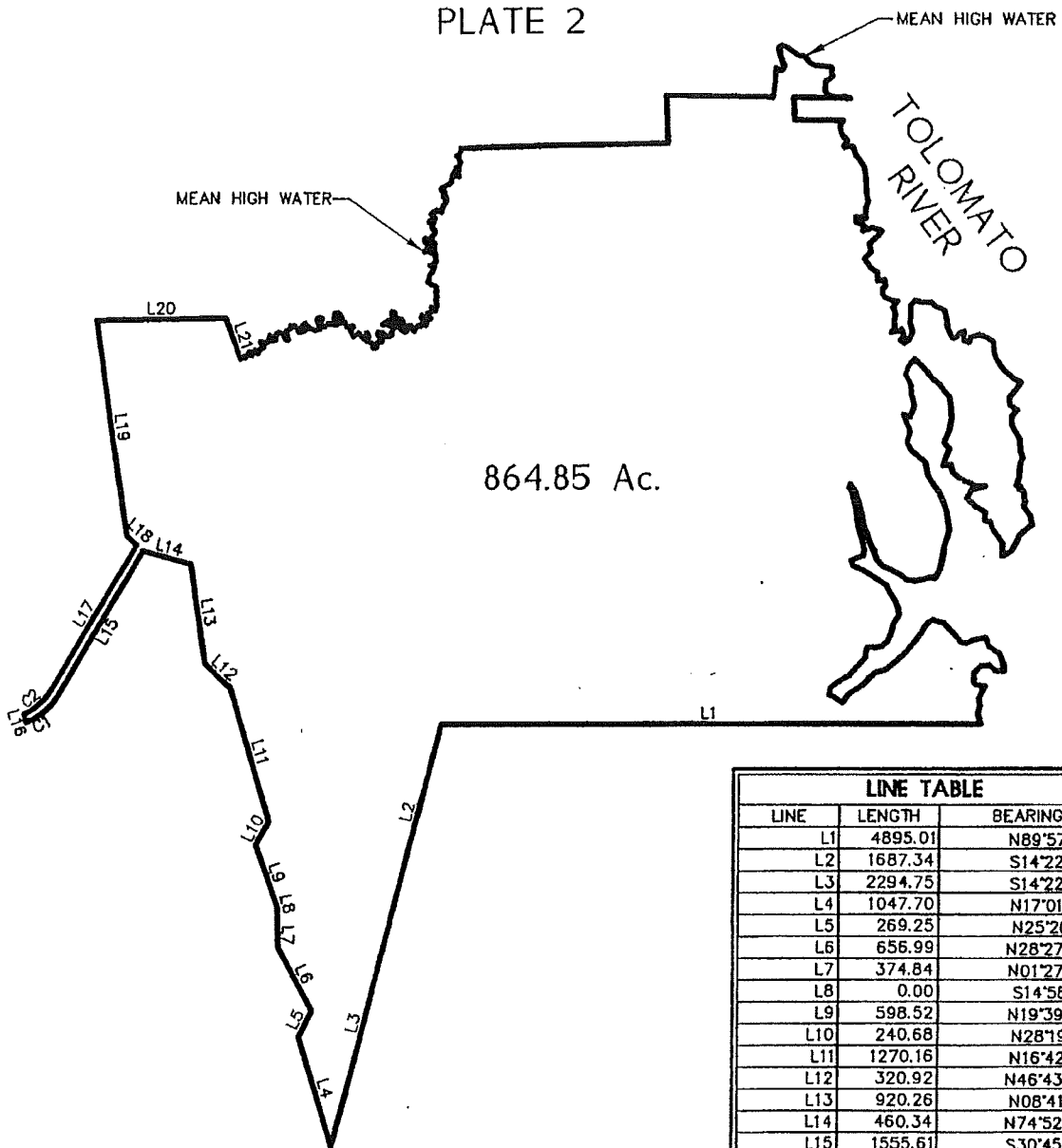


PLATE 2



LINE TABLE		
LINE	LENGTH	BEARING
L1	4895.01	N89°57'21"W
L2	1687.34	S14°22'35"W
L3	2294.75	S14°22'35"W
L4	1047.70	N17°01'55"W
L5	269.25	N25°20'13"E
L6	656.99	N28°27'37"W
L7	374.84	N01°27'47"W
L8	0.00	S14°58'38"E
L9	598.52	N19°39'52"W
L10	240.68	N28°19'23"E
L11	1270.16	N16°42'41"W
L12	320.92	N46°43'34"W
L13	920.26	N08°41'41"W
L14	460.34	N74°52'04"W
L15	1555.61	S30°45'00"W
L16	80.00	N20°08'58"W
L17	1570.67	N30°45'00"E
L18	126.37	N48°35'01"W
L19	1975.75	N08°32'25"W
L20	1198.79	N89°09'44"E
L21	389.28	S19°57'07"E

CURVE TABLE						
CURVE	LENGTH	RADIUS	TANGENT	DELTA	CH.-BRG.	CH.-DIST.
C1	368.52'	540.00'	191.76'	39°06'02"	N50°18'01"E	361.41'
C2	313.92'	460.00'	163.35'	39°06'02"	N50°18'01"E	307.86'

England-Thimms & Miller, Inc.

ENGINEERS - PLANNERS
 SURVEYORS - LANDSCAPE ARCHITECTS
 14775 St. Augustine Road
 Jacksonville, Florida 32258
 Certificate of Authorization No.: 2584
 Phone No. (904) 642-8990
 Fax No. (904) 646-9485

DISTRICT BOUNDARY

SWEET WATER CREEK CDD

ST. JOHNS COUNTY, FLORIDA

ETM NO. 05-010-01

DATE: JANUARY 26, 2006

DRAWN BY: D. BRIGHT

DRAWING NO. 2